

Car Air Purifier WDH-AP1212



Dear Customer,

You have chosen a high-quality product. To ensure that you get a lot of enjoyment from this product, here are a few more tips:

In case of any problems:

We hope that the unit meets your expectations! If, despite the greatest possible care, there should ever be cause for complaint, please contact us briefly, as we are very concerned about your satisfaction and would like to clear up any misunderstanding.

Important safety instructions:

- Do not place any objects on the appliance and make sure that the air intake and the exhaust air are always free!
- Supervise the air purifier when children or animals are near the unit !
- Protect the unit from all moisture and wetness !
- Only use the recommended voltage for operating the unit !
- Do not expose the filters to insect spray, they could later release the insect spray unintentionally !
- Switch off and unplug the appliance if you want to clean it !
- Only clean the appliance with mild cleaning agents !
- Do not make any independent modifications to the unit or the cables !
- Please do not operate the unit while driving !

Please switch off the unit immediately and disconnect it from the mains/power supply if anything seems to be wrong !!! In this case, please contact a specialist and do not attempt to repair the unit yourself !!!

Equipment and quality features:

HEPA activated carbon filter combination: The HEPA flow traps and filters particles as small as 0.0003 mm. This includes pollen, germs, mould spores and dust with a purity rate of 99 % !

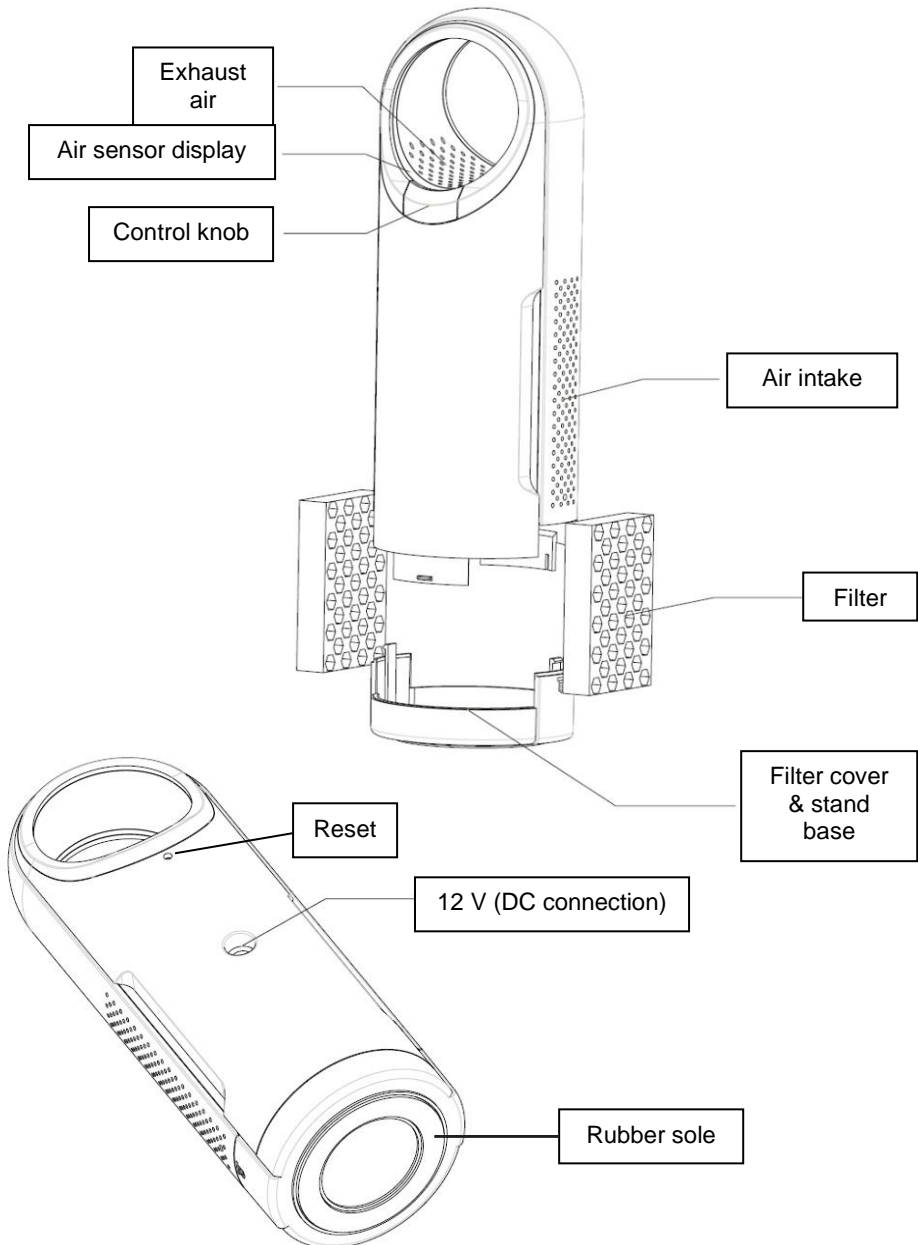
The activated carbon granulate helps to break down many types of smoke and odours (e.g. cigarette smoke) and also toxic vapours, gases and solvents.

Anion exchanger: Produces approx. 2 million anions per second, which proactively combat smoke and other dirt particles in the room.

Air sensor: Automatically measures the tendency of the air quality and signals it in different luminous colours.

2 air circulation levels: Strong & Weak

Description of the unit parts:

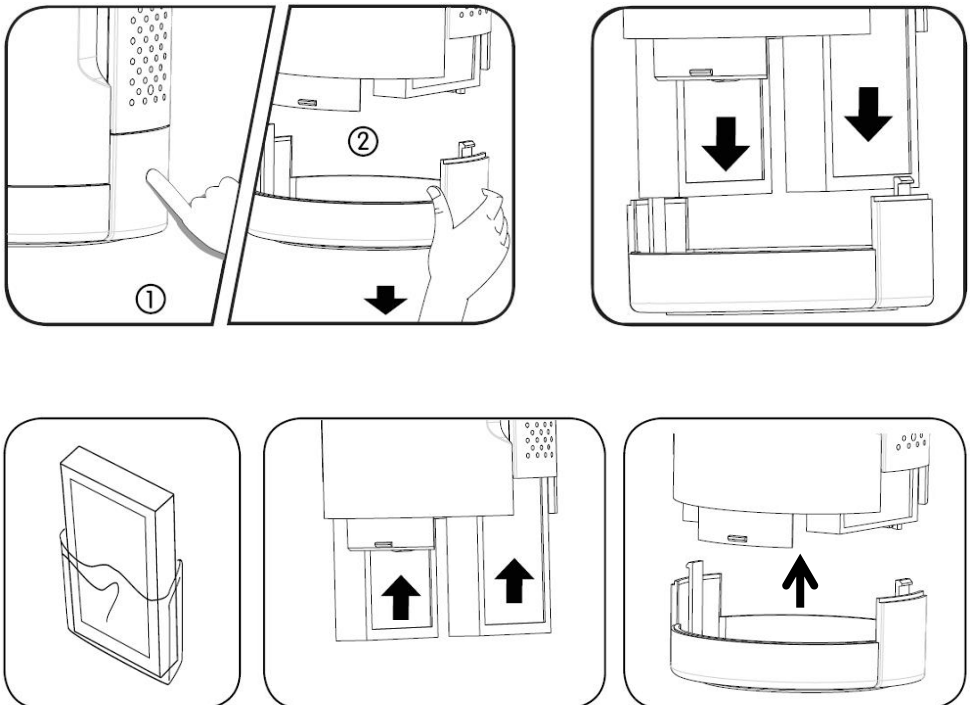


Instructions for use:

1. Preparation and installation of the filters

The car air purifier is equipped with two filters (HEPA-activated carbon combination) from the factory. First open the lower filter cover by gently pressing in the side panels of the filter cover with your fingers and then pulling it downwards (open). Now remove the two small filters. Remove the protective cover of the new filters and then insert them back into the unit. When inserting the filters, make sure that the white HEPA filter side always faces outwards ! Finally, put the filter cover back on the unit. Now the car air purifier is ready for use!

See the charts below:

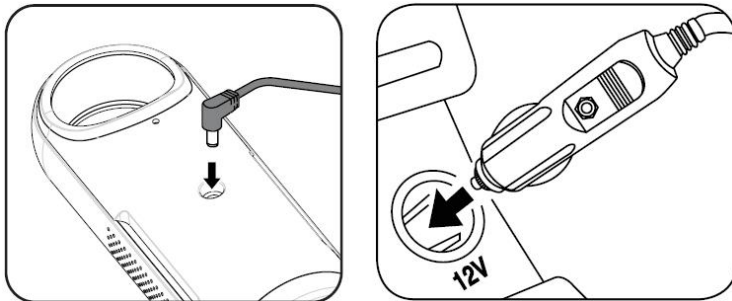


2. Connection / Power supply

Connect the 12 V power cable included in the scope of delivery to the air purifier. Then plug the other end into the power source (e.g. the cigarette lighter). Make sure that the cable does not interfere with your driving at any time !

It is best to place the car air purifier in the centre arm console or in the cup holder. The unit can easily be operated in different positions (standing, lying, inclined). The car air purifier can then be switched on.

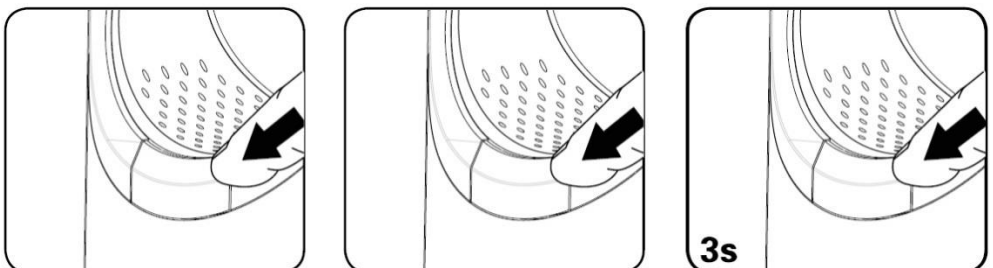
See the charts below:



3. Operation / Settings


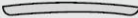


The air purifier is completely controlled by the control knob. Press the control knob once and the air purifier switches on and starts purifying the air with high air circulation. Press the control knob a second time and the air purifier switches to low air circulation. Pressing the control knob again changes the mode back to high air circulation, etc. To switch off the air purifier, press the control button continuously for about three (3) seconds. The air purifier then switches off.

See the charts below:



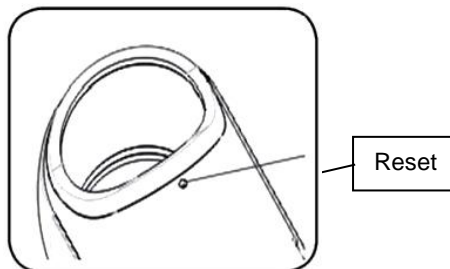
4. The air sensor display

After switching on the air purifier, the unit starts measuring the air quality (tendency) independently. Please note that the proper air quality tendency is only available after approx. 2 - 6 minutes. During this phase, the air sensor displays "Purple" by default. The following air sensor displays are possible on the unit:

<u>Air sensor display</u>	
	Blue = Very good
	Green = Good
	Purple = Loaded
	Red = Filter change request

5. Filter change

The filters last approximately 1440 hours, after which the air sensor indicator lights up red and the car air purifier stops air purification operation. This process signals to you that a filter change is necessary. Disconnect the air purifier from the power supply. Change the filter (see detailed description under point 1. "Preparing and installing the filters"). Then connect the unit properly to the power supply. Now press the reset button with a paper clip or biro for approx. 3 seconds (see diagram below). Now the car air purifier is ready for operation again.



Technical data:

Model name:	WDH-AP1212
Power supply:	12 V / 6 W
Max. Power consumption:	6 W
Max. Air circulation:	2.1 m ³ /h
Dimension (H/W/D):	190 x 66 x 72 mm
Weight:	0,3 kg

We reserve the right to make deviations in the technical data!

Troubleshooting:

The unit itself emits an unpleasant odour:

The new air purifier still has a slight odour of its own (fresh plastic, new motor, new paint, etc.). This new smell will dissipate within a very short time (1-2 weeks)!

The air sensor is causing problems:

1. Remember that the air purifier is not used when it is in a draught (e.g. between two open windows).
2. In very rare cases, the air sensor may react negatively to certain substances (e.g. polish, perfume, etc.) in your vehicle compartment. In these cases, you should ignore the air sensor display.

It takes too long to neutralise smoke and/or odours:

In general, our air purifier is well suited for odour and smoke neutralisation. But please note that the result/end result of our air purifier always depends on how much odour particles are flowing in and how the air circulation is at your place !

This is because the inserted filters always absorb only a part of all odour particles per pass. Therefore, one specifies at least three filter passes until all odour particles are absorbed.

(Note: When filtering dust and particles, one filter pass is sufficient to clean the air, as all particles are retained in the fine filter = 99% effectiveness. In the case of odours, the activated carbon part of the filter is mainly used and here the filter medium needs approx. three filter cycles per sqm³ of air until one can speak of clean air = 33% effectiveness !!) Furthermore, it is also important to consider that odour patterns can already be present in the inventory (upholstery) - and depending on the nature of the individual materials, it can take a considerable amount of time until these have released the odours again.

(The WDH-AP1212 car air purifier only eliminates odours that are circulated or filtered through it).

The unit does not respond / The unit cannot be switched on:

1. Check whether the unit is properly connected to a power source and whether it is currently supplying power. Especially in vehicles, it often happens that the power is only available when the ignition is activated.
2. Check whether the filter change indicator lights up. If so, change the filters and then press the reset button (see point 5. of the instruction manual).

Other:

Declaration of guarantee

Notwithstanding the statutory warranty claims, the manufacturer grants a warranty in accordance with the laws of your country, but at least 1 year (in Germany 2 years for private individuals). The warranty begins on the date of sale of the appliance to the end user.

The guarantee only covers defects that are due to material or manufacturing faults.

Warranty repairs may only be carried out by an authorised customer service. To make a warranty claim, please enclose the original sales receipt (with date of sale).

Excluded from the guarantee are:

- Normal wear and tear
- Improper applications, such as overloading the appliance or non-approved accessories.
- Damage due to external influences, use of force or foreign objects
- Damage caused by non-observance of the operating instructions, e.g. connection to an incorrect mains voltage or non-observance of the assembly instructions.
- Completely or partially dismantled units

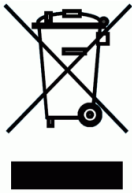
Conformity:

The air purifier has been tested and itself and/or parts thereof have been manufactured under the following (safety) standards:

CE (EMC) conformity, of course.

Conformity tested according to: EN 50498:2010
EMC Directive 2014/30/EU

Correct disposal of this product:



Within the EU, this symbol indicates that this product should not be disposed of with household waste. Waste equipment contains valuable recyclable materials that should be recycled. Furthermore, the environment or human health should not be polluted by uncontrolled waste disposal. Please dispose of Therefore, dispose of old appliances via suitable collection systems or send the appliance for disposal to the place where you bought it. They will then recycle the appliance.

I wish you much pleasure with this appliance.

Your Aktobis AG

Keep these instructions for use in a safe place !

